

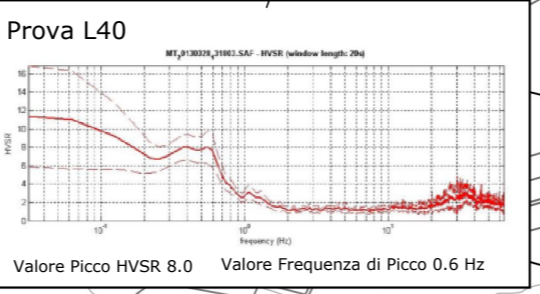
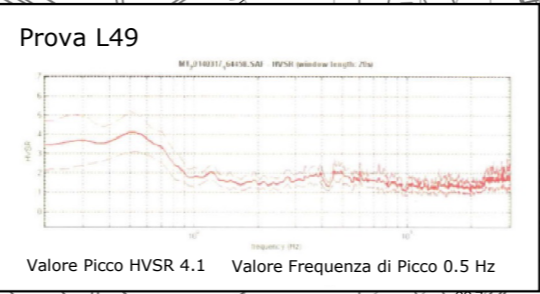
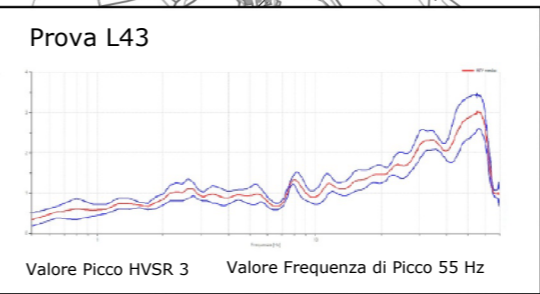
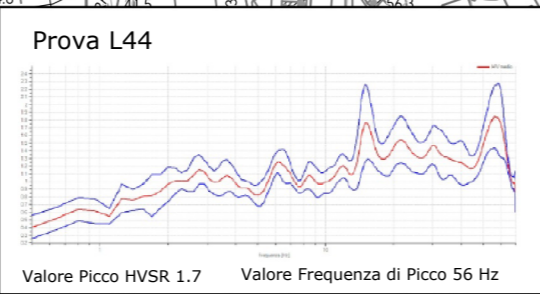
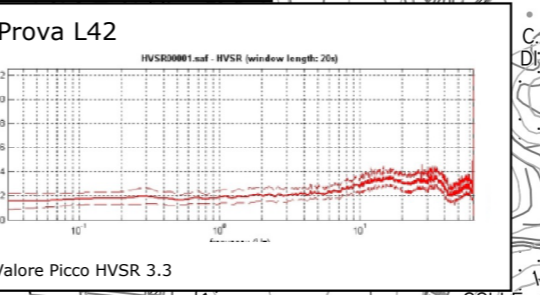
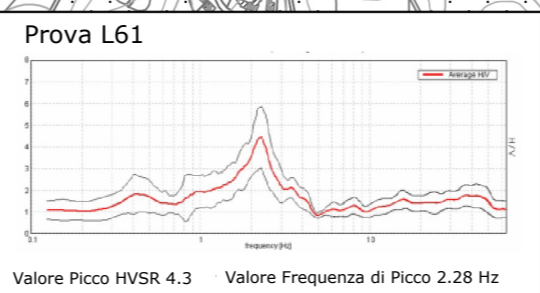
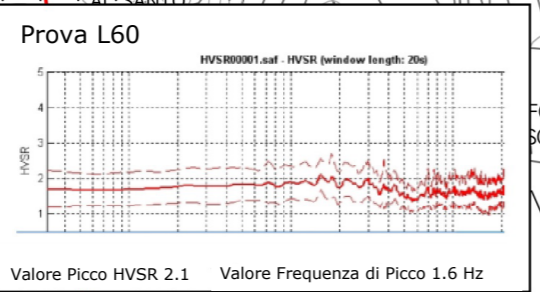
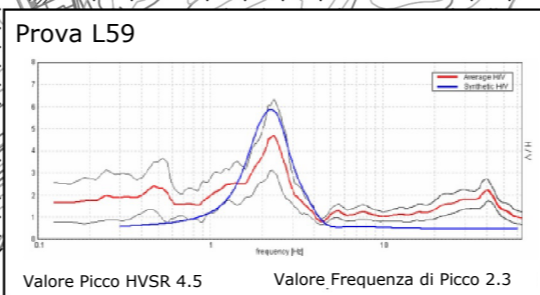
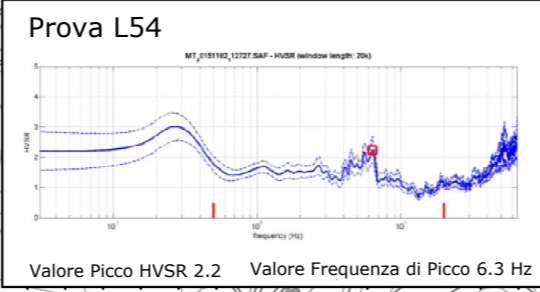
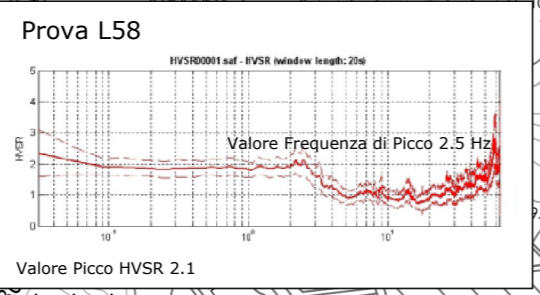
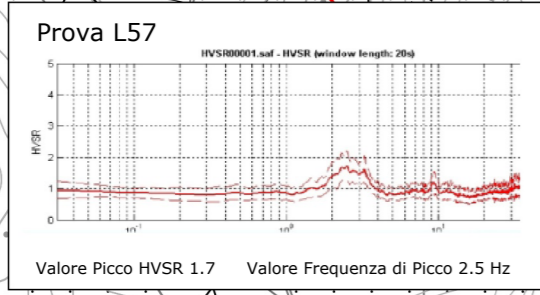
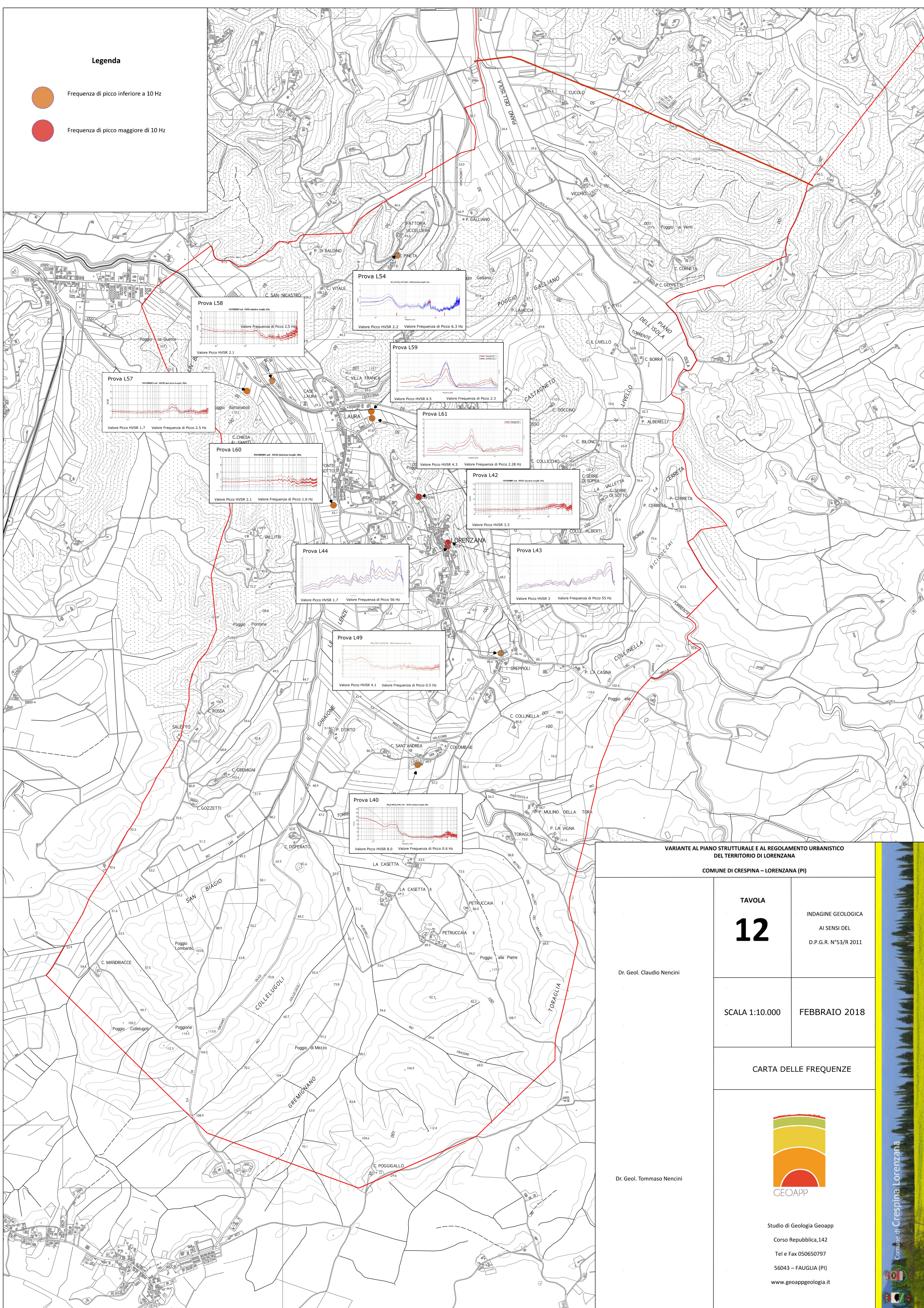


**Legenda**

-  Frequenza di picco inferiore a 10 Hz
-  Frequenza di picco maggiore di 10 Hz



**VARIANTE AL PIANO STRUTTURALE E AL REGOLAMENTO URBANISTICO DEL TERRITORIO DI LORENZANA**

COMUNE DI CRESPINA - LORENZANA (PI)

TAVOLA  
**12**

INDAGINE GEOLOGICA  
AI SENSI DEL  
D.P.G.R. N°53/R/2011

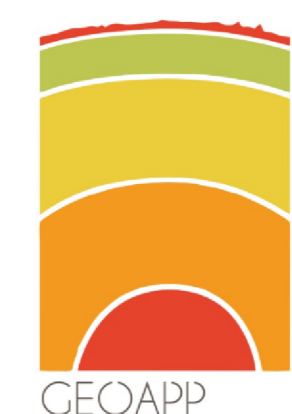
Dr. Geol. Claudio Nencini

SCALA 1:10.000

FEBBRAIO 2018

**CARTA DELLE FREQUENZE**

Dr. Geol. Tommaso Nencini



Studio di Geologia Geoapp  
Corso Repubblica,142  
Tel e Fax 050650797  
56043 - FAUGLIA (PI)  
www.geoappgeologia.it